



EC..RB

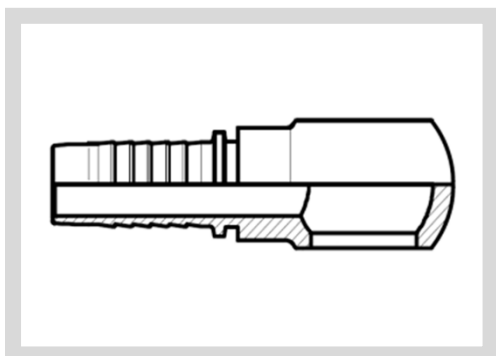
BANJO bolt thread

BSP BANJO

BANJO BSP

BSP BANJO

Referentie Référence Reference					
	DN	MM	INCH		BANJO bolt thread
EC0310RB	5	4,8	3/16"	1/8" - 28	280
EC0313RB	5	4,8	3/16"	1/4" - 19	280
EC0410RB	6	6,4	1/4"	1/8" - 28	280
EC0413RB	6	6,4	1/4"	1/4" - 19	280
EC0417RB	6	6,4	1/4"	3/8" - 19	280
EC0421RB	6	6,4	1/4"	1/2" - 14	250
EC0513RB	8	8,0	5/16"	1/4" - 19	280
EC0517RB	8	8,0	5/16"	3/8" - 19	280
EC0521RB	8	8,0	5/16"	1/2" - 14	250
EC0613RB	10	9,5	3/8"	1/4" - 19	280
EC0617RB	10	9,5	3/8"	3/8" - 19	280
EC0621RB	10	9,5	3/8"	1/2" - 14	250
EC0817RB	12	12,7	1/2"	3/8" - 19	280
EC0821RB	12	12,7	1/2"	1/2" - 14	250
EC0823RB	12	12,7	1/2"	5/8" - 14	210
EC0826RB	12	12,7	1/2"	3/4" - 14	210
EC1021RB	16	16,0	5/8"	1/2" - 14	250
EC1023RB	16	16,0	5/8"	5/8" - 14	210
EC1026RB	16	16,0	5/8"	3/4" - 14	210
EC1226RB	19	19,0	3/4"	3/4" - 14	210
EC1233RB	19	19,0	3/4"	1" - 11	165
EC1633RB	25	25,4	1"	1" - 11	165





EC..RB

BANJO bolt thread

METRISCHE BANJO

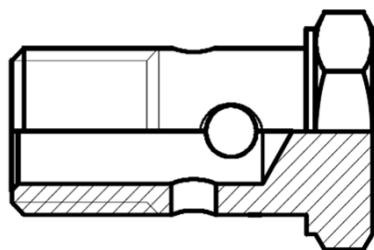
BANJO MÉTRIQUE

METRIC BANJO

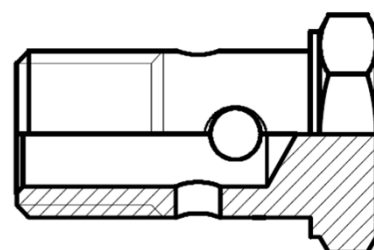
Referentie Référence Reference					
	DN	MM	INCH		BANJO bolt thread
EC0310RB	5	4,8	3/16"	M10x1	200
EC0312RB	5	4,8	3/16"	M12x1.5	200
EC0314RB	5	4,8	3/16"	M14x1.5	200
EC0410RB	6	6,4	1/4"	M10x1	200
EC0412RB	6	6,4	1/4"	M12x1.5	200
EC0414RB	6	6,4	1/4"	M14x1.5	200
EC0416RB	6	6,4	1/4"	M16x1.5	200
EC0418RB	6	6,4	1/4"	M18x1.5	200
EC0512RB	8	8,0	5/16"	M12x1.5	200
EC0514RB	8	8,0	5/16"	M14x1.5	200
EC0516RB	8	8,0	5/16"	M16x1.5	200
EC0518RB	8	8,0	5/16"	M18x1.5	200
EC0614RB	10	9,5	3/8"	M14x1.5	200
EC0616RB	10	9,5	3/8"	M16x1.5	200
EC0618RB	10	9,5	3/8"	M18x1.5	200
EC0620RB	10	9,5	3/8"	M20x1.5	200
EC0622RB	10	9,5	3/8"	M22x1.5	200
EC0818RB	12	12,7	1/2"	M18x1.5	200
EC0820RB	12	12,7	1/2"	M20x1.5	200
EC0822RB	12	12,7	1/2"	M22x1.5	200
EC0826RB	12	12,7	1/2"	M26x1.5	200
EC1022RB	16	16,0	5/8	M22x1.5	200
EC1026RB	16	16,0	5/8	M26x1.5	200
EC1226RB	19	19,0	3/4	M26x1.5	200
EC1230RB	19	19,0	3/4	M30x1.5	200
EC1630RB	25	25,4	1"	M30x1.5	200

BB..-HP

BANJO screw thread
BSP BANJOBOUT
BOULON BANJO BSP
BSP BANJO BOLT



Referentie Référence Reference					
	DN	MM	INCH		
BB1/8-HP				1/8" - 28	
BB1/4-HP				1/4" - 19	
BB3/8-HP				3/8" - 19	
BB1/2-HP				1/2" - 14	
BB5/8-HP				5/8" - 14	
BB3/4-HP				3/4" - 14	
BB1-HP				1" - 11	



BBM..-HP

BANJO screw thread
METRISCHE BANJOBOUT
BOULON BANJO MÉTRIQUE
METRIC BANJO BOLT

Referentie Référence Reference					
	DN	MM	INCH		
BBM10x1-HP				M10x1	
BBM12x1.5-HP				M12x1.5	
BBM14x1.5-HP				M14x1.5	
BBM16x1.5-HP				M16x1.5	
BBM18x1.5-HP				M18x1.5	
BBM20x1.5-HP				M20x1.5	
BBM22x1.5-HP				M22x1.5	
BBM26x1.5-HP				M26x1.5	
BBM30x1.5-HP				M30x1.5	